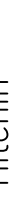
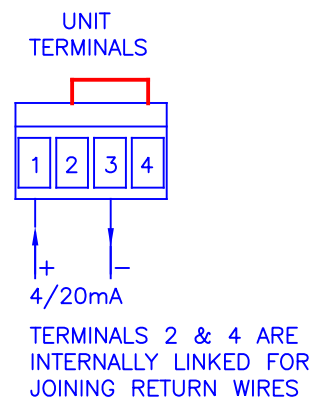
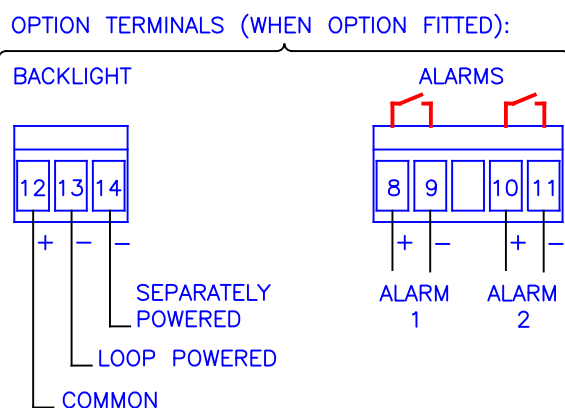
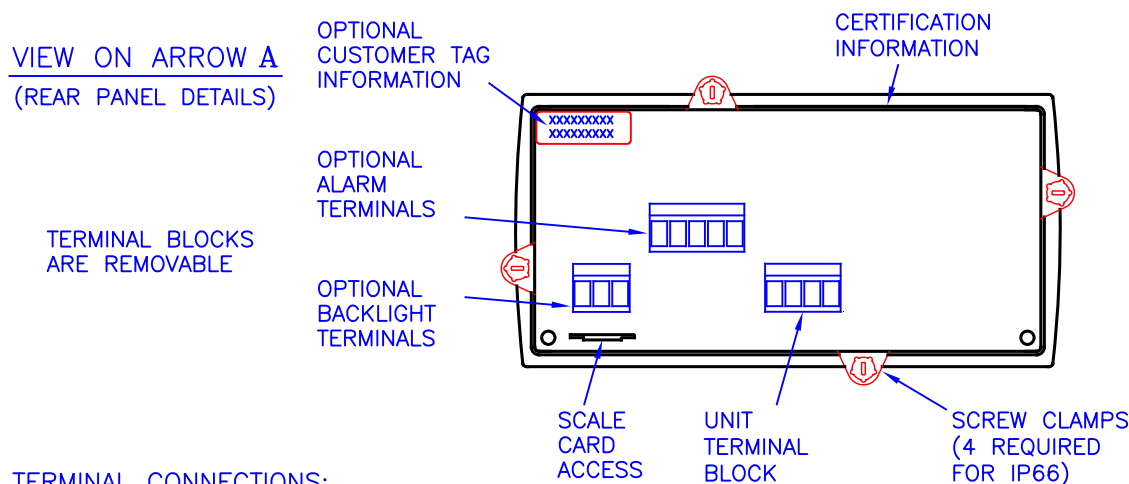
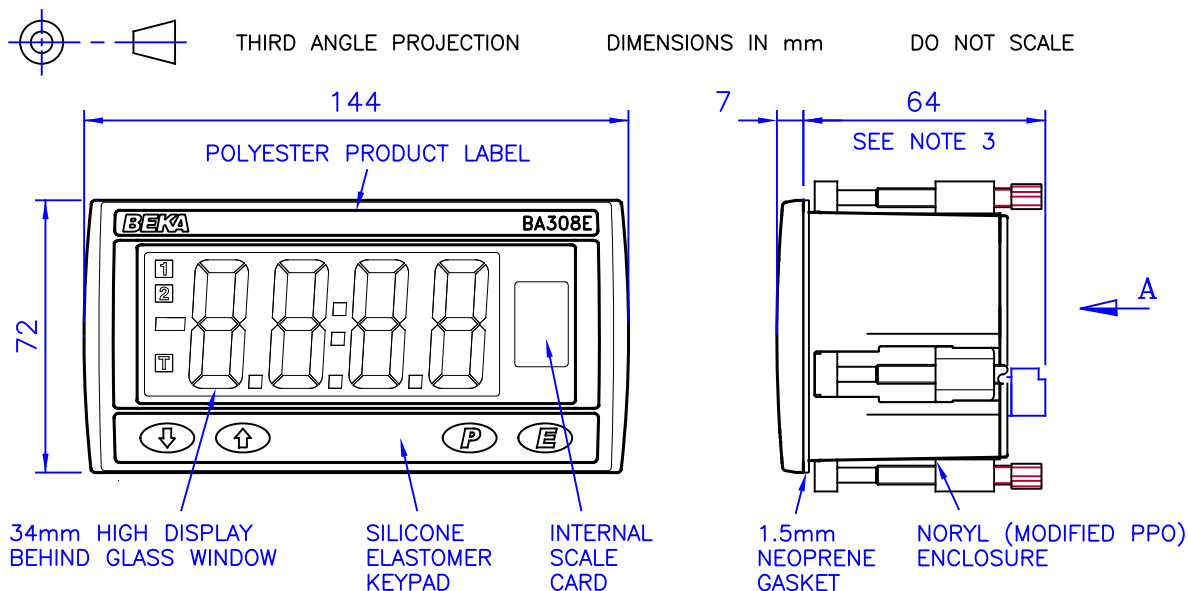


Iss.	Date	Modification	Ckd.	Appd.
1	01.12 2011	.	AMH	AC



Hitchin
England
company confidential, copyright reserved.

Iss.	Date	Modification	Ckd.	Appd.



- ### INSTALLATION:

- 1 INSERT UNIT INTO PANEL CUTOUT FROM FRONT.
- 2 SCREW CLAMPS ARE CLIPPED TO THE INDICATOR
& TIGHTENED FROM REAR OF PANEL.
RECOMMENDED TORQUE 22cNm MAX.
- 3 FOR PANELS GREATER THAN 3mm THICK ADD
ADDITIONAL DEPTH FOR CLAMPS.
(ie ADD PANEL THICKNESS LESS 3mm)

PANEL CUTOUT:

DIN 43 700: $138^{+1.0}_{-0} \times 68^{+0.7}_{-0}$

FOR IP66: $136^{+0.5}_{-0} \times 66.2^{+0.5}_{-0}$

Drawn RC	Checked AMH	Scale NTS
Drawing No. CD308E		