
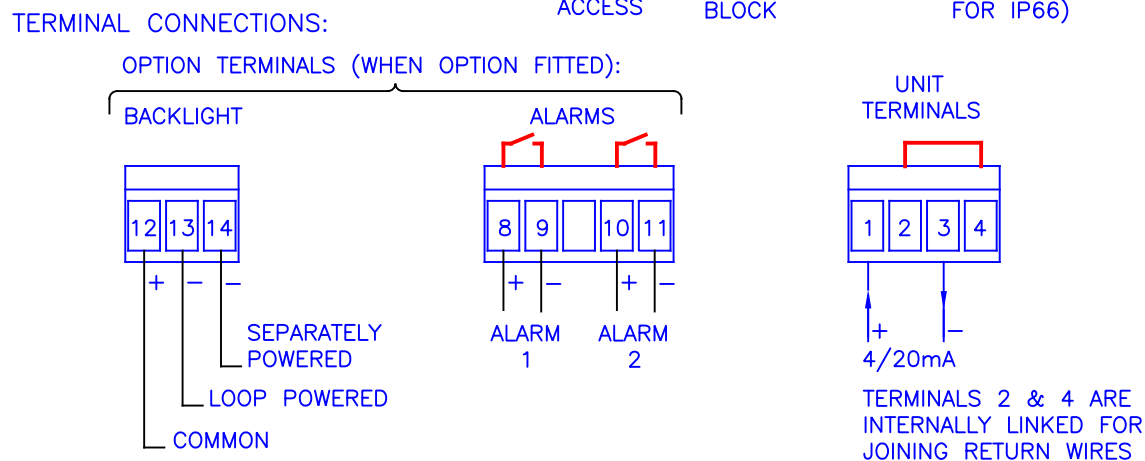
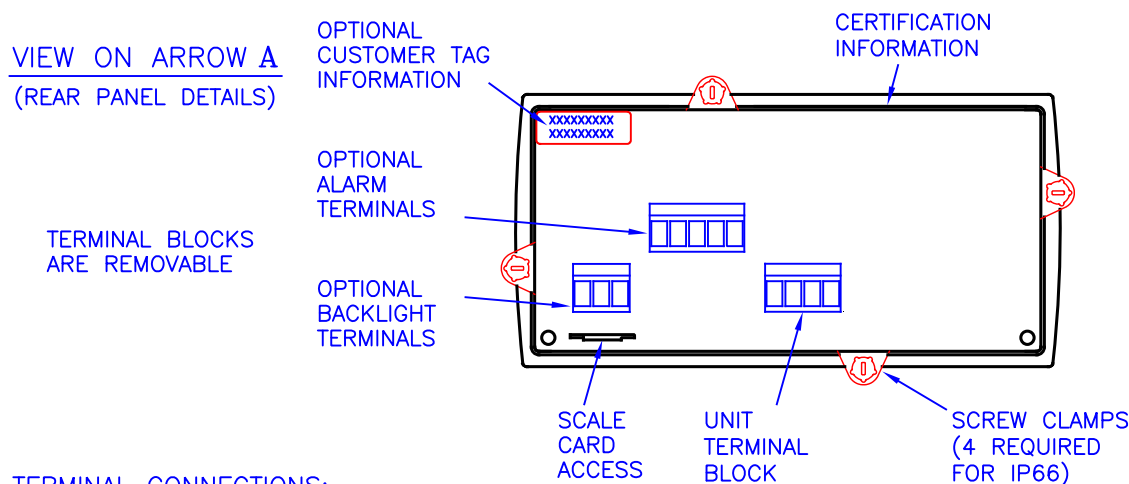
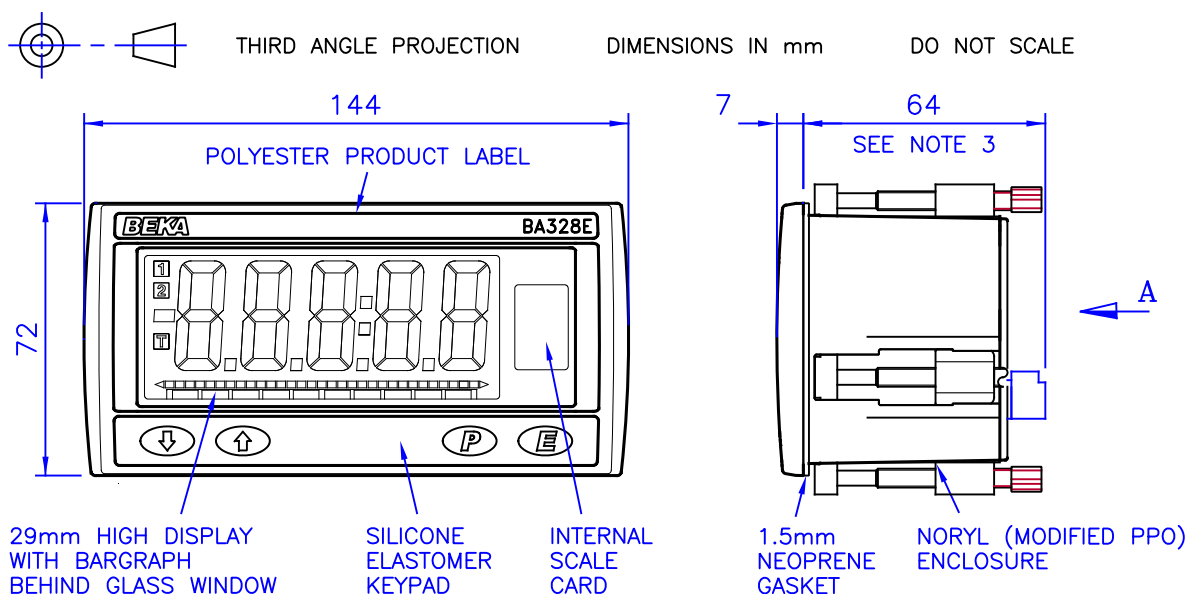


Iss.	Date	Modification	Ckd.	Appd.
1	01.12 2011	.	AMH	AC



BEKA associates
Hitchin
England
company confidential, copyright reserved.

Iss.	Date	Modification	Ckd.	Appd.



- ## INSTALLATION:
- 1 INSERT UNIT INTO PANEL CUTOUT FROM FRONT.
 - 2 SCREW CLAMPS ARE CLIPPED TO THE INDICATOR & TIGHTENED FROM REAR OF PANEL.
RECOMMENDED TORQUE 22cNm MAX.
 - 3 FOR PANELS GREATER THAN 3mm THICK ADD ADDITIONAL DEPTH FOR CLAMPS.
(ie ADD PANEL THICKNESS LESS 3mm)

PANEL CUTOUT:
DIN 43 700: $138^{+1.0}_{-0}$ x $68^{+0.7}_{-0}$
FOR IP66: $136^{+0.5}_{-0}$ x $66.2^{+0.5}_{-0}$

Drawn RC	Checked AMH	Scale NTS
Drawing No. CD328E		