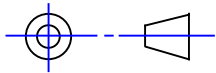


Iss.	Appd.	Modification	Date	Iss.	Appd.
1			09.06 2017		
2		IP66 note was IP65, white added. CRN 1801.	02.08 2019		

**BEKA associates**  
Hitchin England  
company confidential, copyright reserved.



THIRD ANGLE PROJECTION

DIMENSIONS IN mm

DO NOT SCALE

#### LAMP DETAILS:

LENS (POLYCARBONATE)

SEALING WASHER (NITRILE)

LOCKING RING

KEYWAY

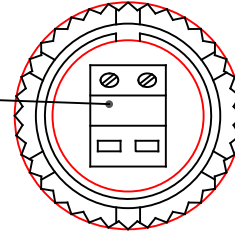
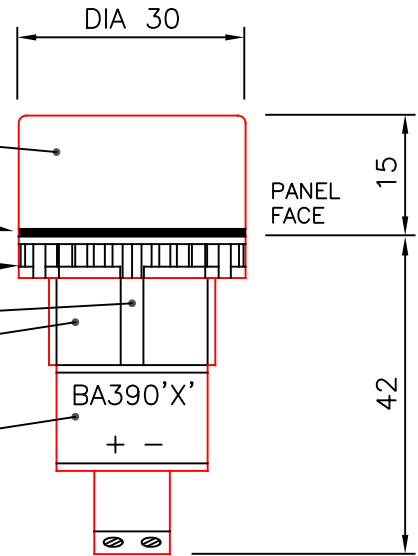
BODY (POLYAMIDE)

LABEL WITH CERTIFICATION INFORMATION AND MODEL NUMBER:

'X' IDENTIFIES LAMP COLOUR:

A - AMBER  
B - BLUE  
G - GREEN  
R - RED  
W - WHITE  
S - SPECIAL

TERMINALS (1.5mm )



#### PANEL CUTOUT:

DIAMETER 22.5 ± 0.2

#### SPACING: (VERTICAL x HORIZONTAL)

LAMPS ONLY 31 x 31 min.

WITH LEGEND PLATES 47 x 31 min.

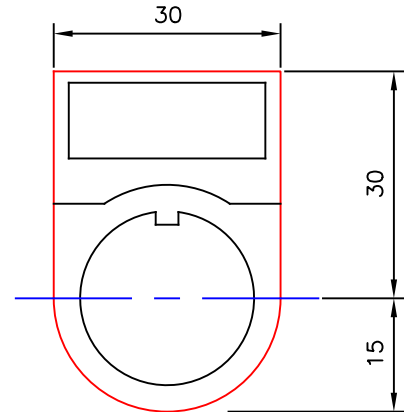
#### INSTALLATION:

- 1 REMOVE LOCKING RING FROM LAMP
- 2 INSERT LAMP FROM FRONT OF PANEL
- 3 RE-FIT LOCKING RING FROM REAR OF PANEL. ENSURE KEYWAY FACES TOP OF LAMP

#### NOTE:

CORRECT INSTALLATION WILL PROVIDE IP66 PROTECTION FRONT OF PANEL

#### LEGEND PLATE DETAILS:



Title

CUSTOMER DRAWING for  
**BA390 LED CLUSTER LAMP**

Drawn

RC

Checked

Scale

—

Drawing No.