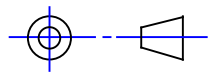


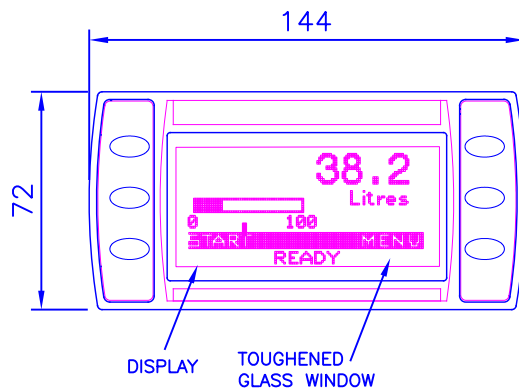
Iss.	1	Date	.	Modification	.	Ckd.		Appd.	
Iss.		Date		Modification		Ckd.		Appd.	
<b>BEKA associates</b> Hitchin England company confidential, copyright reserved.									



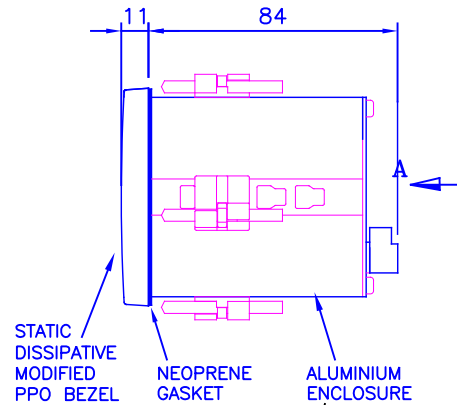
THIRD ANGLE PROJECTION

DIMENSIONS IN mm

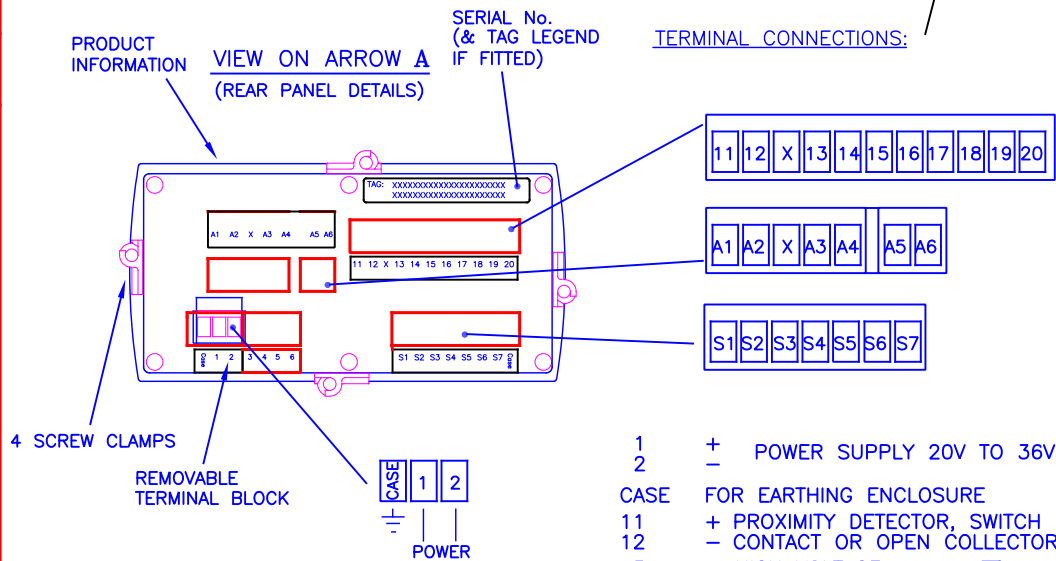
DO NOT SCALE



DISPLAY

TOUGHENED  
GLASS WINDOWSTATIC  
DISSIPATIVE  
MODIFIED  
PPO BEZELNEOPRENE  
GASKETALUMINIUM  
ENCLOSUREPRODUCT  
INFORMATIONVIEW ON ARROW A  
(REAR PANEL DETAILS)SERIAL No.  
(& TAG LEGEND  
IF FITTED)

TERMINAL CONNECTIONS:

**INSTALLATION:**

- 1 INSERT UNIT INTO PANEL CUTOUT FROM FRONT.
- 2 SCREW CLAMPS ARE CLIPPED TO THE INDICATOR & TIGHTENED REAR OF PANEL.
- 3 MAXIMUM RECOMMENDED TIGHTENING TORQUE

**PANEL CUTOUT:**

$$\text{DIN 43 700: } 138^{+1.0}_{-0} \times 68^{+0.7}_{-0}$$

$$\text{FOR IP65: } 136^{+0.5}_{-0} \times 66.2^{+0.5}_{-0}$$

1	+	POWER SUPPLY 20V TO 36V	
2	-		
CASE		FOR EARTHING ENCLOSURE	
11	+	PROXIMITY DETECTOR, SWITCH	INPUT A
12	-	CONTACT OR OPEN COLLECTOR	
13	+	HIGH VOLTAGE	INPUT B
14	+	LOW VOLTAGE	
15		mV MAGNETIC PICK OFF	
16		COMMON FOR INPUT 2	EXTERNAL LINKS
17		4/20mA	
18		COMMON FOR LINKS	
19		CONFIGURE SECURITY LINK	EXTERNAL SWITCHES
20		INHIBIT INPUT LINK	
S1		START	
S2		STOP	
S3		RESET	
S4		MENU	
S5		DO NOT USE	
S6		DO NOT USE	
S7		COMMON FOR SWITCHES	
A1	+	CONTROL 1	OUTPUTS 2 & 3 MAY EACH BE CONFIGURED TO HAVE ONE OF SIX FUNCTIONS
A2	-		
A3	+	OUTPUT 2	
A4	-		
A5	+	OUTPUT 3	
A6	-		

Title

CUSTOMER DRAWING for BA658C  
FLOW BATCH CONTROLLER  
IN PANEL MOUNTING ENCLOSURE

Drawn  
SH

Checked

Scale  
NTS

Drawing No.  
Sheet 1 of 2

Iss.	Date	Modification	Ckd.	Appd.	<div><div>BEKA</div><div><b>associates</b></div><div>Hitchin England</div><div>company confidential, copyright reserved.</div></div>					Iss.	Date	Modification	Ckd.	Appd.
1	.	.												

