



TASSTA

PRODUCT PORTFOLIO



www.tassta.com

hello@tassta.com +49 30 57710674

TASSTA GmbH

TASSTA Technologies FZE

TASSTA Africa

TASSTA India

TASSTA Americas

TASSTA Asia

TASSTA Brazil

WHO WE ARE?

The name TASSTA is made up of 3 keywords:



Founded in
2005
in Hanover, Germany

Since
2013
on the market

More than
50
employees worldwide

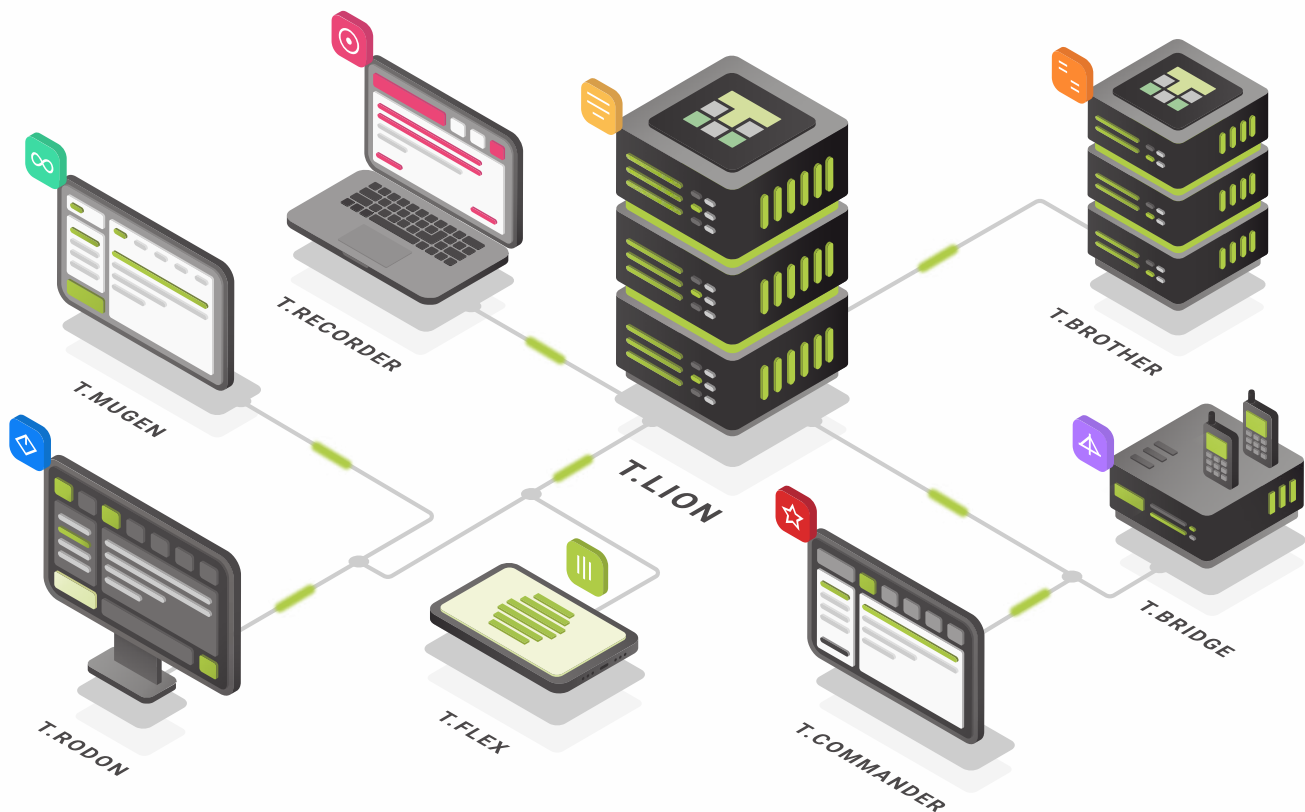
REFERENCES



TASSTA SOLUTIONS

- TASSTA offers a modern Push-to-Talk solution which takes advantage of all the technical capabilities of regular smartphones.
- TASSTA is the all-in-one solution for individual and group calls, emergency communications, messaging, data, GPS and indoor positioning, with the detailed activity history recording. By leveraging the power of global IP networks, TASSTA customers can expand beyond geographic boundaries and unify distributed teams into a single taskforce.
- TASSTA allows organizations to re-use the existing equipment and interconnect with PMR networks, enabling the business as usual with minimal investments.

ECOSYSTEM



PUSH-TO-TALK

Push-to-Talk is much more than a simple call. TASSTA PTT services eliminates the bounds between your teams by enriching the communication with:

KEY FEATURES

- Group and private PTT calls
- Broadcast call
- Channel multi listening
- Real-time presence
- Do not disturb
- Priority talkgroup scan
- Background calling
- Voice message callback
- Text messaging
- Video, photo and file sharing
- Data and file exchange



PUSH-TO-VIDEO



SERVICE INCLUDES

- Secure video streaming and recording;
- Post-processing, including annotations and image recognition;
- Full control over all aspects of video transmission;
- Interoperability with external systems and services.

Video Streaming

A policeman starts streaming a video stream from a camera installed in a patrol car, when a suspicious vehicle is stopped, thanks to the high resolution, the dispatcher can check the vehicle registration numbers.

Surveillance Cameras

A security company employee located in the coverage area (according to GPS coordinates) of surveillance cameras that are compatible with the Push-to-Video (PTV) standard may request a video image.

Unmanned Aerial Vehicles

Employees involved in the elimination of the consequences of a man-made accident conduct a survey of the area dangerous to human life using an unmanned aerial vehicle equipped with a video system compatible with the 3GPP mission critical standard.

EXPERIENCE SEAMLESS VIDEO COMMUNICATION



WITH T.RODON AND T.FLEX

Introducing TASSTA Push-to-Video (PTV) – the ultimate solution for all your video communication needs. Whether you're looking for one-to-one conversations, many-to-many collaborations, or even video emergency calls, T.Rodon and T.Flex have you covered. Join the video communication revolution with TASSTA's advanced features.

PTV FEATURES

VIDEO CALL

Connect with others in real-time, seeing and hearing each other for immersive and interactive conversations. Simply right-click a user, select Video Call, and wait for the video stream to appear. It's that easy!

MULTI PTV CALL

Amplify your communication with many-to-many video calls. Initiate a multi PTV call and enjoy seamless video and audio transmission between multiple participants. Claim the floor, talk, and interact with everyone in the call effortlessly.

VIDEO EMERGENCY CALL

In critical situations, enable video for emergency calls. Send video alerts while transmitting crucial audio information to ensure rapid response and effective communication.

PUSH-TO-VIDEO CALL (PTV)

Take part in dynamic PTV calls where participants can push the PTT button to transmit both voice and video. Engage in one-on-one PTV calls or have multiple active PTV calls simultaneously, turning every conversation into a collaborative experience.

CONFERENCE PTV CALL

Create a virtual conference room where users can join or leave the ongoing call without interrupting the conversation. Collaborate, share ideas, and discuss with ease, thanks to the conference PTV call feature.



Experience TASSTA's user-friendly interface, allowing you to toggle cameras, mute/unmute microphones, and manage your video communication effortlessly. Remember to maintain a stable internet connection for optimal video call quality. Unlock the power of seamless video communication with T.Rodon and T.Flex. Start now and revolutionize your conversations!

INDUSTRIES

Quality and efficiency of communications achieved through TASSTA technology have a profound impact on all processes in business, government and public safety. Combined with lower maintenance costs and re-use of the existing equipment, TASSTA communication solutions can give you a significant competitive advantage. In addition, TASSTA might be an essential element in the strategic plan of many organizations.



POLICE



ARMY



EMERGENCY SERVICES



AGRICULTURE



AIRPORTS



BUILDING & CONSTRUCTION



COURIERS & EXPRESS SERVICES



FIRE BRIGADES



EVENT MANAGEMENT



HEALTHCARE



CAMPUS & SHOPPING CENTERS



PUBLIC OR PRIVATE SECURITY COMPANIES



LOGISTICS



NAVIGATION, FREIGHT & PORTS



PUBLIC TRANSPORT



GOVERNMENTAL ORGANIZATIONS



TAXI SERVICES



HOSPITALITY

T.BRIDGE FEATURES



KEY FEATURES

- Group and Individual Call
- Messaging
- GPS Tracking
- Alarming

SUPPORTED NETWORKS

Hytera

sepura
a Hytera company

taït
communications

ICOM

KENWOOD

DAMM

MOTOROLA



EFFORTLESS ISSUE TRACKING WITH TASSTA TASK MANAGER

Efficiently manage all your tasks, invoices, orders, services, and more with TASSTA Task Manager, the universal issue tracking tool available in T.Rodon. Designed to cater to your company's unique needs, Task Manager simplifies issue management and ensures smooth workflows.



KEY FEATURES

SECURE DATA EXCHANGE

Rest easy knowing that your data is exchanged using the reliable and secure HTTPS protocol, guaranteeing the confidentiality and integrity of your communication.

FLEXIBLE TRACKING

Customize issue trackers to match your requirements, whether it's tasks, invoices, orders, or any other type of issue. TASSTA Task Manager adapts to your workflow seamlessly.

EXTENSIBLE ISSUE TYPES & STATUSES

Tailor the issue tracker types and statuses to align with your specific business processes, allowing for greater flexibility and customization.

ATTACHMENTS AND HISTORY

Enhance collaboration and documentation by attaching relevant files such as invoices, images, or documents to issues. The History field keeps a record of all edits, providing a transparent overview of changes made.

IMPORT AND EXPORT CAPABILITIES

Effortlessly import and export issues to enhance collaboration and facilitate data sharing. Use CSV files for easy integration with external systems, allowing for seamless issue management.

REAL-TIME ISSUE STATUS

Stay updated with automated issue processing algorithms that provide real-time statuses, enabling you to track progress effortlessly.

EFFORTLESSLY ASSIGN & PRIORITIZE

Assign issues to team members or individuals effortlessly, ensuring tasks are delegated effectively. With five colored levels of priority, you can easily manage and prioritize tasks based on urgency.

COMPREHENSIVE ISSUE DETAILS

Capture all the necessary information with common issue details such as subject, description, time, and date. Additionally, track time spent on tasks and add custom fields to meet your specific tracking needs.

SEAMLESS TEAM COLLABORATION

Assign tasks to teams and streamline collaboration. Create teams, add members, and ensure efficient coordination for enhanced productivity.

SIMPLIFY ISSUE MANAGEMENT WITH FILTERS

Efficiently filter issues based on your specific criteria using the intuitive Issue filter feature. Combine multiple parameters to refine your search and gain precise insights.

Enjoy the benefits of TASSTA Task Manager for streamlined issue tracking and enhanced productivity. Download TASSTA now and transform your workflow.

MAP TOOLS



ENHANCING GEOGRAPHICAL OPERATIONS WITH T.RODON

T.Rodon, developed by TASSTA, incorporates a comprehensive Map Tools plugin that enables users to optimize their geographical operations.

With GPS tracking capabilities and integrated map components, Map Tools provides a range of features to enhance location-based activities and facilitate effective communication.

MAP TOOLS FEATURES

ZOOM, PAN & ROTATE

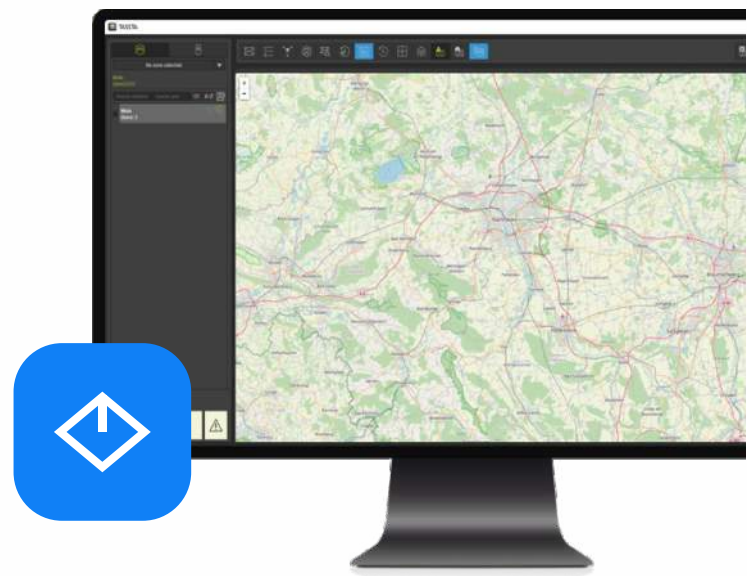
Users can easily navigate the map by zooming in and out, panning across the view, and rotating the map to their preferred orientation. Keyboard shortcuts, buttons on the map interface, and mouse gestures make navigation intuitive and seamless.

DETAILED STREET VIEW

The integrated map component offers a detailed street view with essential information such as house numbers, road names, and addresses. It provides clear and precise location details, making it easier for users to identify specific areas and plan their activities accordingly.

USER POSITIONING AND IDENTIFICATION

Map Tools displays the positions of TASSTA users on the map, allowing for real-time tracking. Each user is represented by an icon with a label indicating their name, group affiliation, and lone worker protection status. Additionally, icons change dynamically to indicate whether a user is actively speaking, in an emergency, or has unknown coordinates.



COMMUNICATION AND ACTIONS

Users can leverage the integration of Map Tools with other TASSTA plugins to perform various actions directly from the map interface. These actions include sending messages, assigning tasks, making calls, muting users, and more. By right-clicking on a user's icon, users can access a context menu with these options for seamless communication and task management.

CUSTOMIZATION

Map Tools allows users to customize the appearance and visibility of channels on the map. Users can assign different colors to channels, making it easier to distinguish between them. Additionally, users can choose whether the participants of a channel are displayed on the map or hidden for improved clarity.

ADVANCED MAP TOOLS FEATURES



POINTS AND WAYPOINTS

Users can create single points or waypoints on the map, which represent specific locations or transitions between locations. These points and waypoints can be used to define routes, assign tasks, or mark important areas.

GPS HISTORY TRACKS

Map Tools provides the ability to visualize a user's recorded movements over time with points and segments on the map. Users can select a specific user and time range to display the GPS track history. This feature facilitates analysis, tracking, and review of user movements for monitoring and reporting purposes.

DYNAMIC GROUPS BY AREA SELECTION

Users can quickly create dynamic groups based on users gathered in a specific area of the map. By selecting users within a defined region on the map, users can create dynamic groups instantly. This feature simplifies the process of organizing and managing users based on their geographical proximity.

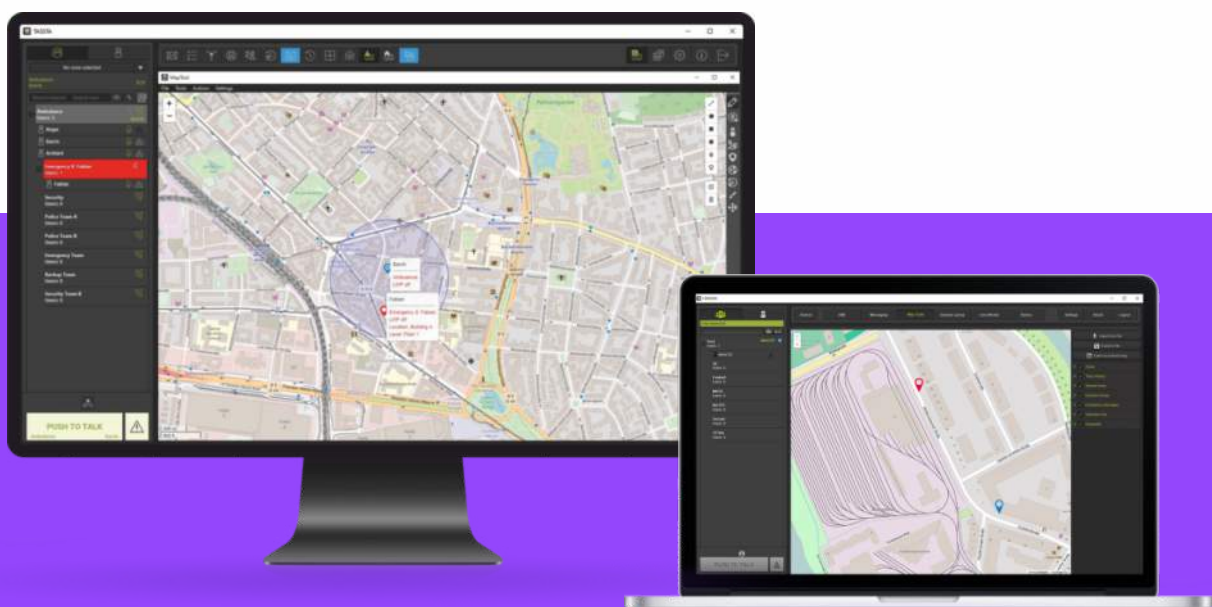
GEOFENCING WITH ZONES

Map Tools enables the creation, management, and monitoring of virtual zones on the map. Users can define boundaries for geographic areas, such as cities or urban areas, and establish control and monitoring functionalities within these zones. This includes tracking user positions, receiving notifications about users entering or leaving a zone, communicating with users within a zone, and creating dynamic groups based on geographical locations.

GUARD TOURS

Users can create and manage guard tours, which represent security patrol routes. Guard tours consist of checkpoints that users must visit in a specific order and according to a schedule. Map Tools allows users to create guard tours, configure checkpoints, assign them to users, and track progress during the tours. Events related to guard tours are recorded in the T.Rodon Events Journal.

By leveraging the comprehensive functionalities of Map Tools within T.Rodon, users can streamline their geographical operations, enhance communication, and optimize task management.



INDOOR LOCALIZATION



INCREASED SAFETY

LOWER COSTS

HIGH EFFICIENCY



The ability to locate personnel and movable objects within buildings and structures helps optimize existing production processes and makes work more secure. Coupled with public GPS, Indoor Localization is actively used in warehouses, factories and logistics companies, airports, railway stations, hospitals, fairs and museums.

Moreover, Indoor Localization can be an excellent addition to systems for various purposes, and the transfer of location to the control desk (TRodon) will allow centralization and increase the safety of work.

TASSTA's Indoor Localization helps in solving production problems of various levels of complexity, from full automated localization of cargo pallets to the localization of mobile operating terminals. Deployment of TASSTA solutions at the enterprise increases efficiency and coordination of employees by improving their interaction.



ENSURE SAFETY WITH LWP

Introducing Lone Worker Protection (LWP) - a comprehensive set of safety features designed to meet industry standards and ensure the well-being of lone workers. With LWP, you can work independently with peace of mind, knowing that you are connected to your team and protected in critical situations.

KEY FEATURES OF LWP

SAFETY MONITORING

LWP incorporates features such as man down detection, movement monitoring, impact detection, and battery level control to ensure your safety in hazardous environments.

SENSOR CHECK

Before using LWP, perform a sensor check to ensure the proper functioning of all safety features. Follow the instructions on the screen to complete the check.

EMERGENCY CONTACT

LWP enables emergency calls by GSM and emergency SMS, ensuring that your distress signals reach the assigned personnel. The contact numbers can be set by the administrator.

DISPATCHER PRESENCE

When enabled, LWP keeps you under the direct supervision of a dispatcher who is running T.Rodon. This mode ensures constant monitoring and immediate response in case of emergencies.

PERIODIC CHECK

The Periodic Check feature prompts you at regular intervals to confirm your well-being. Respond to the prompt within the specified time to indicate your safety. Failure to respond triggers an emergency call.



IMPORTANT REMINDERS:

- Switch T.Flex app to priority mode to ensure the correct functioning of LWP features. Refer to your device manual for details.
- Confirm with the administrator that LWP is enabled for your user account in T.Commander.
- All emergency messages created by LWP are stored in the emergency journal.

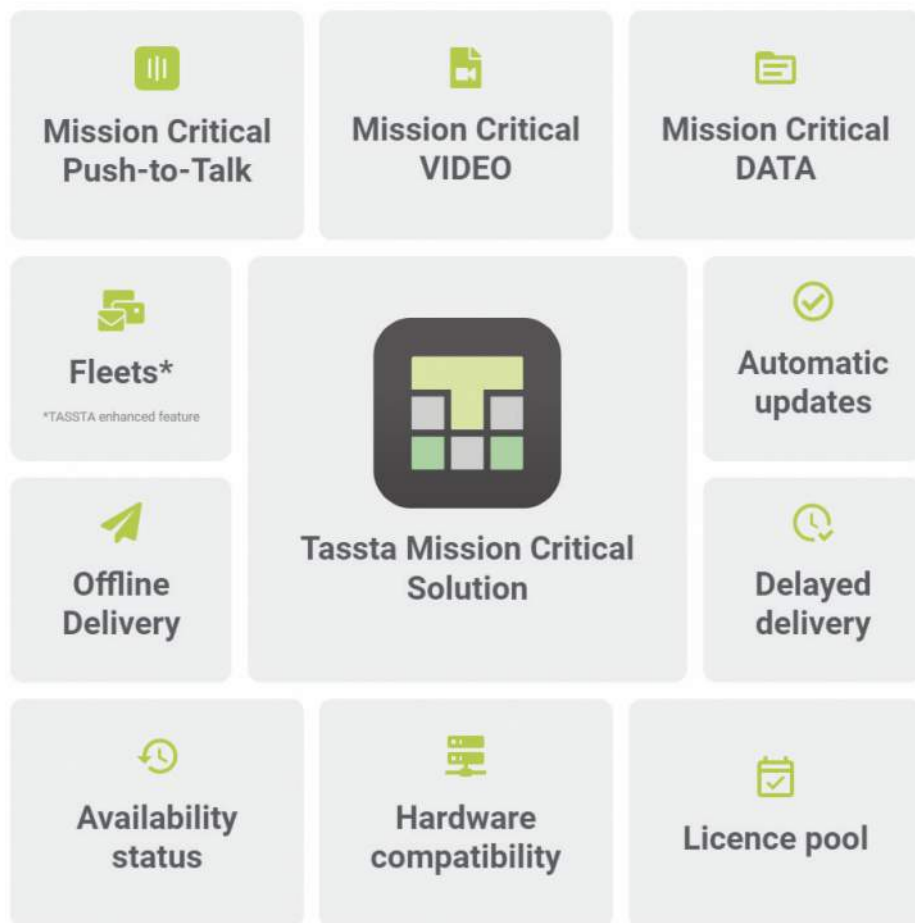
Stay safe and connected with Lone Worker Protection. Experience the ultimate safety solution by downloading TASSTA today!

MCX SOLUTION

The MCX TASSTA solution is applicable primarily to mission critical services relying on LTE availability.

Certain mission critical service functionality sets such as dispatch and administrative functionality can also be supported over non-3GPP networks. The solution can be used for public safety applications and also for general commercial applications in businesses such as utility companies and railways.

FEATURES



STANDARDS AND CERTIFICATES



UNLIMITED FEATURES

USER INTERFACE

- Simple and intuitive interface that does not require IT experience;
- Broad customization options according to user's needs;
- Support for different languages and cultures;
- Integration with a wide range of devices and accessories, including professional radios;

COMMUNICATION

- Group calls and channels;
- One-to-one calls;
- Emergency calls and broadcasts;
- End-to-end encryption;
- Cross calls with professional mobile radio (PMR) networks;

MESSAGING

- Text messages;
- File and photo exchange;
- Status notifications;
- Communication bridging via SMS and email messages;

VIDEO CALLS

- Push-to-Video and group video calls;
- One-to-one video calls;
- Emergency video calls;

ACTIVITY HISTORY

- Call and message recording;
- Location history;
- Historical search, analysis and replay;

MAP

- Detailed customizable map;
- Real-time displaying of user or device positions;
- Integration of the map with other functions;
- Geofencing with real-time alerts;
- Guard tours;

INDOOR LOCALIZATION

- AI-based indoor positioning;
- No dedicated beacons required;
- 2D and 3D visualization;
- Interoperability with GPS data;

TASK MANAGER

- Handle, prioritize and track orders in real-time;
- Dispatcher monitoring;
- Automated routines;

REMOTE CONTROL

- Ambient listening;
- Remote camera control: photo & video;

LONE WORKER PROTECTION

- BGR 139 certified protection of remote workers;
- Periodic checks;
- Movement and impact detection;
- Man down alarms;
- Device status monitoring;
- Automated emergencies.

OFFICES AND PARTNERS



TASSTA Americas



TASSTA GmbH



TASSTA Technologies FZE



TASSTA India



TASSTA Asia



TASSTA Brazil



TASSTA South Africa

**MORE
THAN**

50

**partners
worldwide**



TASSTA

Become your best self.

www.tassta.com | hello@tassta.com