



Enterprise Mobility

**MOBILE WORKER
SOLUTIONS**

**Tablets & Smartphones
RFID & Barcode Systems
Active RTLS Tracking
Connectivity Solutions**



Tablets & Smartphones

Throw away your paper and clipboards and drastically improve your operational productivity by digitizing your workforce.

Our range of intrinsically safe tablets and smartphones can be taken almost anywhere so your team can remain completely connected to the rest of the organization and access applicable enterprise programs from anywhere in the plant.

Video calibration applications on the devices enable on-site maintenance technicians to troubleshoot face-to-face with experienced engineers. Faulty equipment can be diagnosed and repaired in real time, resulting in significantly reduced downtime. Put the welfare and safety of your valued mobile workers first by pairing up their tablet or smartphone with an intrinsically safe health monitoring sensor pack. With real-time monitoring of heart rate, breathing rate and skin temperature, the clever software which forms part of the solution recognizes the early symptoms of heat stress and sends critical alerts to supervisors before a life threatening event takes place.

IS945.1 Tablet

- » Windows Operating System
- » Large 10.1" screen size
- » 8 GB Ram
- » Class I Division 1, ATEX, IECEx Zone 1 Certification **Applied For**



IS940.1 Tablet

- » Android Operating System
- » Large 10.1" screen size
- » 8 GB Ram
- » Class I Division 1, ATEX, IECEx Zone 1 Certification **Applied For**



IS930.1 Tablet

- » Android Operating System
- » Compact 8" screen size
- » Ultra-Rugged with MIL-STD-810G Drop protection
- » -20 - +60C Operating Temp
- » Class I Division I, ATEX, IECEx Zone 1 Certified
- » Class I, Division 2 version also available



IS540.1 5G Smartphone

- » Android Operating System
- » AT&T Network Ready
- » Compatible with CBRS private cellular LTE/5G frequency bands
- » Clear 6" full HD Display
- » Bluetooth® 5.2
- » Qualcomm QCM6490 Octa Core
- » Class I Division 1, ATEX, IECEx Zone 1 certified
- » Class I, Division 2 version also available



IS440.1 5G Radio

- » Channel selector e.g. for PTT applications
- » Programmable red key (e.g. for lone worker protection/SOS)
- » Programmable side key (e.g. for PoC/PTT)
- » 8-pin ISM interface for optional audio accessories
- » Powerful 4800 mAh battery for extreme runtime as an optional accessory
- » Amplified loudspeaker for noisy work environments
- » ATEX, IECEx Zone 1 Certified **Applied For**



IS-VS1A.1 Valve Sense

- » Mobile inspection system for leak detection through algorithms and AI
- » Software-guided acoustic emission inspection process
- » Automated data transfer in cloud-based back office
- » Cost savings through predictive maintenance
- » Class I Division 1, ATEX, IECEx Zone 1 Certified



Realwear Navigator Z1

- » Android-based Smart Glasses
- » Complete hands free operation with exceptional voice recognition
- » Clear, high resolution microdisplay
- » Full-shift internal battery 8-10 hours
- » Class I Division 1, ATEX, IECEx Zone 1 Certified



Ex Tablet & Phone Cases

- » Explosion proof cases for iPad & iPhone
- » Wireless charging enabled
- » Third party certified for hazardous areas
- » Class 1 Division 2, ATEX, IECEx Zone 2 certified



RFID & Barcode Systems

We have a large range of intrinsically safe handheld RFID readers and barcode scanners available for use in Class 1 Division 2 and 1 hazardous locations. With integrated Bluetooth® connectivity, they can simply be

paired to a host PC or one of our intrinsically safe tablets to provide the ultimate data capture solution for hazardous area use. Loaded with innovative features including vibrate on scan / read plus audible notification, operators know exactly when they have successfully read the RFID tag or scanned the barcode.

For the complete automated maintenance inspection or asset tracking solution combine our intrinsically safe readers and tags with our intuitive, user-friendly software. With Safetytracker, create unique inspection check lists through the desktop platform that are automatically displayed on our handheld devices running the mobile application once an asset RFID tag has been read. Tagminder provides full visibility of your batch production processes with the capability of printing specific barcode labels to identify raw materials and keep track of their consumption so any potential finished-goods quality issues down the line can easily be traced back to specific lots of raw material.

iTAG500 Passive RFID Tags

- » Full range of intrinsically safe, certified passive RFID tags
- » UHF FCC and EU versions both available
- » Ultra-rugged high temperature rating options
- » Screw, rivet or use adhesive to fix onto assets
- » Excellent read signal, on, off and near metals and liquids



iRFID100 RFID Reader

- » Integrate many different types of RFID readers
- » Long-range tag reading due to remarkably low insertion loss from RF barrier
- » Remote mount the antennas with standard coax cable for optimum tag reads
- » Integrates with Tagminder software to create an asset or material tracking system
- » Class I Division 1, ATEX, IECEx Zone 1 Certified



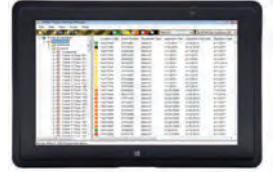
iRFID500 RFID Reader

- » Bluetooth® connectivity to link to mobile device
- » Lightweight and very rugged
- » Reads UHF passive RFID tags
- » Doubles up as stylus for mobile device
- » Class I Division 1, ATEX, IECEx Zone 1 Certified



Safetytracker & Tagminder RFID Software

- » Automate your maintenance inspections with Safetytracker
- » Assign unique serialized RFID tags to assets to be inspected
- » Automatically bring up specific inspection check list for the asset scanned
- » No more double entry of information, cut down human error and increase productivity
- » Track the movement of assets around your plant with Tagminder



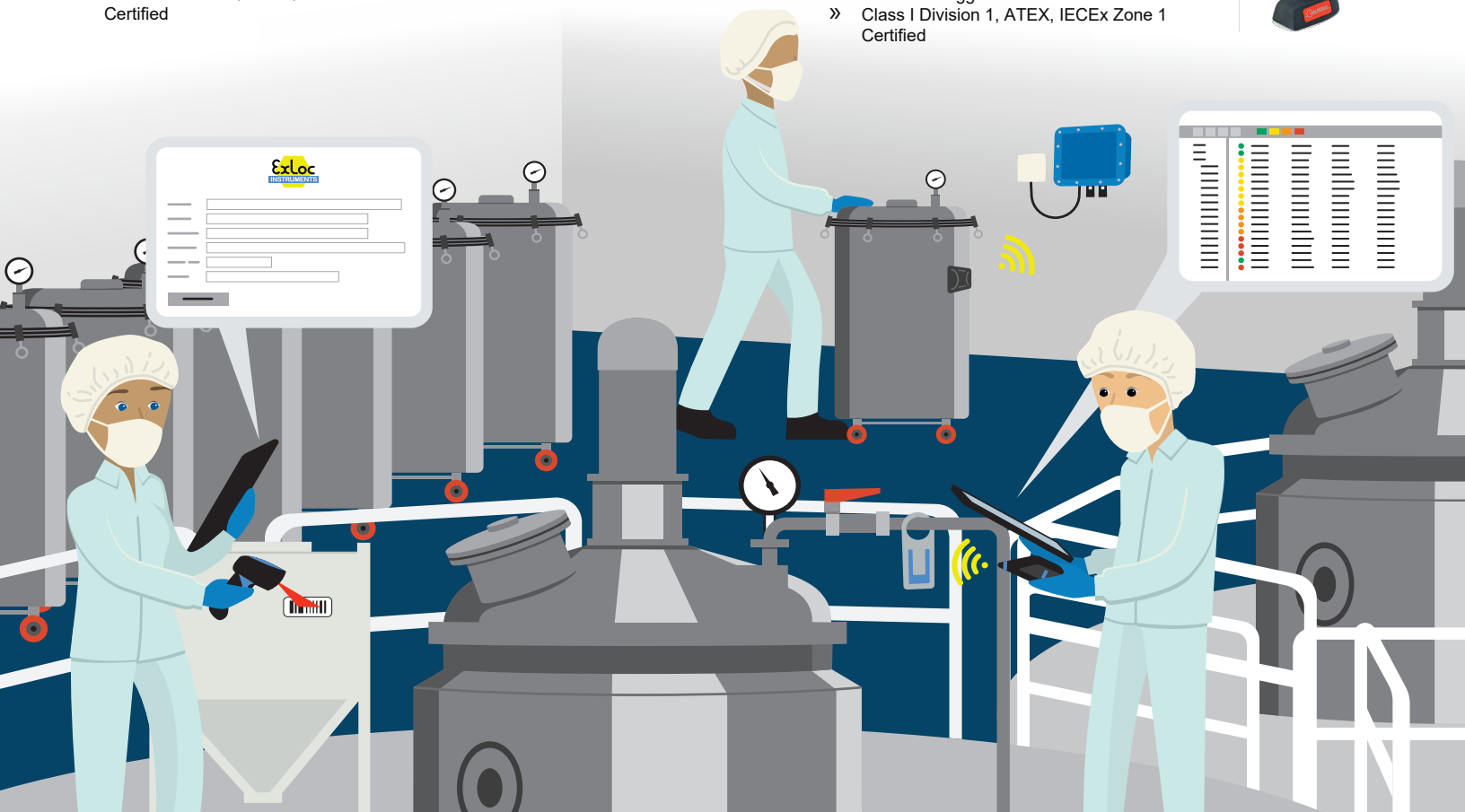
Custom Barcode Scanning Software

- » Custom developed software designed specifically for your requirements
- » Work in progress (WIP) material and batch tracking
- » Print barcodes directly from a tablet or desktop
- » Scan barcodes to consume raw materials
- » Provide lot traceability to maintain high quality standards



Intrinsically Safe Barcode Scanner

- » Interfaces with IS530 Series Smartphone
- » Two scan engines available - medium and long range scanning up to 45 feet
- » Reads all common 1D and 2D barcodes
- » Fast scan rate
- » Laser aimer
- » Hardware trigger
- » Class I Division 1, ATEX, IECEx Zone 1 Certified



Active RTLS Tracking

and quickly locate personnel and assets. Our tracking systems are designed to drastically improve worker safety, production efficiency and asset management in harsh and hazardous environments.

Expertise gained over many years of deploying Wi-Fi networks into industrial environments provides the framework for the delivery of real time location solutions based on active radio frequency identification or RFID.

Extronics enterprise visibility solutions accurately locate and manage assets and people in environments from offshore production rigs to chemical plants. The system includes indoor and outdoor real-time asset location (RTLS), long range active RFID, choke-point visibility, and telemetry; all enabling customers in numerous industries to drive revenues and cut costs.

Companies operating in hazardous areas must be able to accurately

TASSTA

- » CBRS private cellular network
- » Mission critical push-to-talk
- » Push-to-video
- » GPS location and indoor localization
- » Task manager
- » Patrol control
- » Legacy radio network integration



Instant Notifier Alert Software

- » Real-time visual information
- » Instant messaging tool to notify workers of critical events
- » Intuitive and dynamic graphical display with map and alert details
- » Alert management panel includes pending and dismissed alerts
- » Embedded CCTV footage (Windows only)



iTAG X30 Active RFID Tags

- » Accurately locate your workers in hazardous and non-hazardous areas, anytime, anywhere
- » Leverage hybrid technology, GPS, Wi-Fi, LF and BLE for accurate indoor and outdoor tracking
- » GPS capability reduces the need for dense Wi-Fi infrastructure in open areas
- » Fully certified for use in Class I, II Division 1, ATEX and IECEx hazardous areas



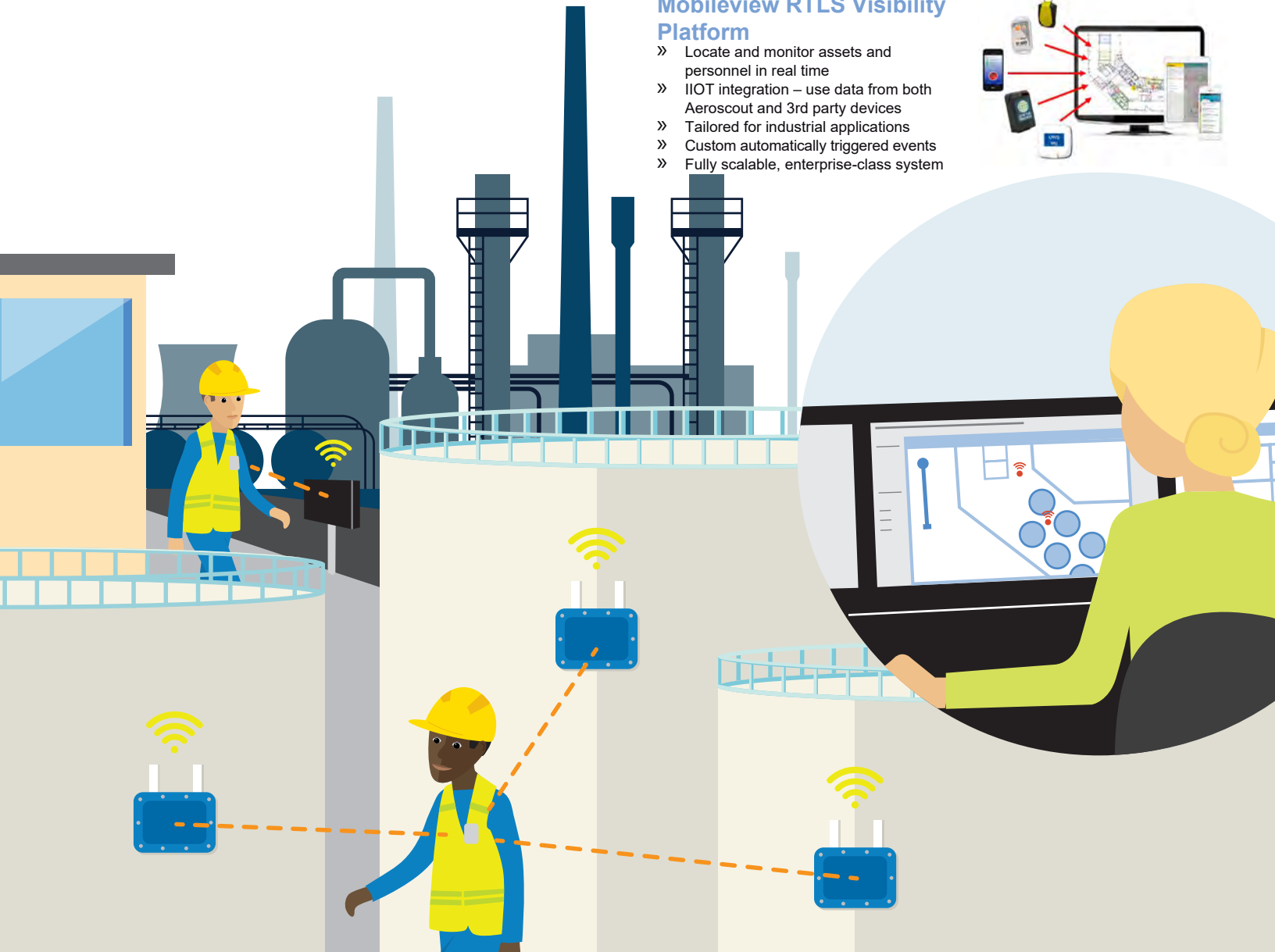
iCITE101 Zone 1 Tag Exciter

- » Real-time chokepoint detection for enhanced location of assets and personnel
- » Robust design – IP66 Fully ruggedized
- » Wi-Fi compliant
- » Wide range of antenna options
- » Class I Division 2, ATEX, IECEx Certified



Mobileview RTLS Visibility Platform

- » Locate and monitor assets and personnel in real time
- » IIOT integration – use data from both Aeroscout and 3rd party devices
- » Tailored for industrial applications
- » Custom automatically triggered events
- » Fully scalable, enterprise-class system



Connectivity Solutions

Hazardous area data is one of the most valuable resources for a company

to access. Information on the efficiency and status of machinery, the location and wellbeing of personnel, scheduling and organizing maintenance, and more – it all contributes towards maintaining productivity and safety.

Our Connectivity Solutions form the core backbone of our TRAC Mobile Worker Solutions. Process Manufacturing companies operate more productively and safer when their mobile workers are connected to their corporations. Connectivity is crucial in modern industry; why should hazardous areas remain in isolation?

iWAP107 Wireless Access Point Enclosure

- » Designed to accommodate the Wi-Fi access point of your choice
- » Intrinsically safe RF outputs
- » Exceptionally low losses provides excellent RF performance
- » Easy to install and maintain
- » Class I Division 1, ATEX, IECEx Zone 1 Certified



iWAP XN3 Wireless Access Point Enclosure

- » Designed to accommodate many different Wi-Fi access points & IoT Gateway
- » Marine-grade aluminum
- » IP66 and NEMA 4 rated, designed for harsh industrial environments
- » Available in four standard sizes
- » Easy to install and maintain
- » Class I, II Division 2, ATEX, IECEx Zone 2 Certified



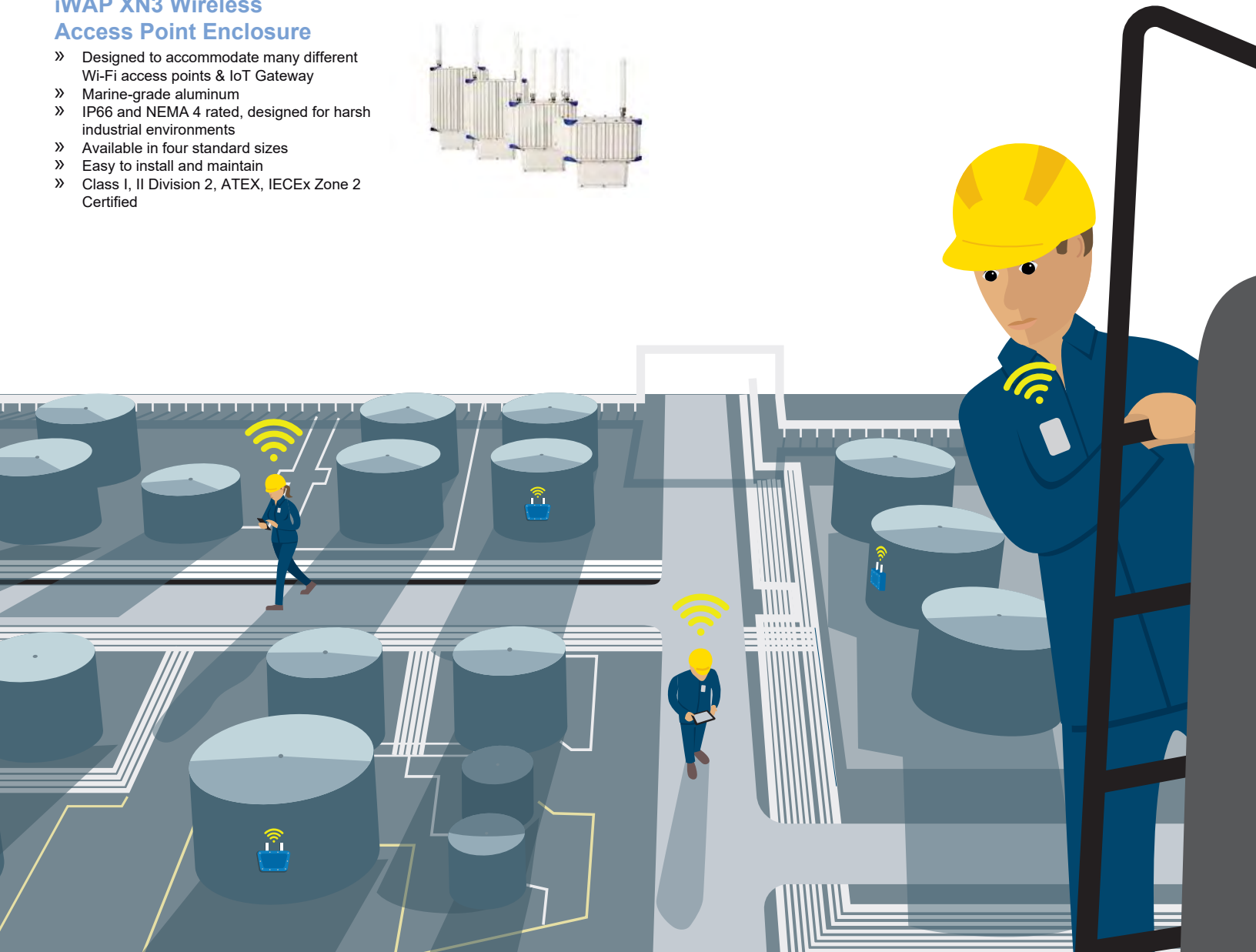
iANT2xx Series Antennas

- » Range of simple apparatus assessed industrial antennas
- » Fully compatible and compliant with iWAP107 and iWAP202 enclosure solutions
- » Directional and omni-directional variants available
- » Direct mount onto an iWAP enclosure and remote mount units available
- » Extremely rugged designed to be used outside



iISOLATE501 & iISOLATE-CT RF Components

- » Intrinsically safe RF isolator allows for connection to non-certified antennas
- » Ultra-wide bandwidth – RF isolator can be used on 150MHz to 8GHz RF applications
- » iISOLATE501 makes the majority of standard RF outputs intrinsically safe
- » Attach antennas and cables to the N-type connector on the iISOLATE-CT by hand
- » When using the iISOLATE501 and iISOLATE-CT together you can simply live connect, disconnect and hot swap your antennas as necessary





Exloc Instruments, Inc., was born from a desire to provide one convenient source for instruments, electronic devices and other products specifically designed and approved for use in hazardous-classified locations involving flammable gas and dust atmospheres. We specialize in products which are outside the scope of the mainstream process control vendors. Third-party approvals for the domestic market include Factory Mutual, Underwriters' Laboratories and the Canadian Standards Association with many products also certified to the latest ATEX and IECEX global standards.

Launched and managed by individuals with a long history of experience and innovation in this unique field of engineering, Exloc has grown to be a widely recognized and respected vendor. Initially serving industrial clients in North America, Exloc is rapidly acquiring customers throughout the world. In 2012 a sister company was launched in the United Kingdom..

Corporate head office is based in Montgomery, Texas, ideal for providing direct support to clients in the U.S. Gulf Coast Region, including the many global entities with engineering and procurement offices located in this strategic oil and gas industry center. The facility includes conference and product demonstration rooms and our integration workshop. Since relocating our head office to Texas we have maintained satellite sales offices in Virginia to provide local support in the Mid-Atlantic and Mid-West regions.

Exloc has partnered with experienced and respected manufacturers in Europe and North America. The result is a constantly growing selection of products which complement each other with minimal overlap. Our products and solutions fall into 6 different product lines:

Indication & Visualization; Process Instrumentation; Engineered Solutions & Enclosures; Plant Maintenance & Tracking Solutions; Industrial Communications; Notification; Cooling & Pressurization

Our Partners



CONTACT US - North America: +1 (281) 978-2040 | UK: +44 (0) 1457 239301
sales@exloc.com | www.exloc.com

15584 Summit Park Drive
Suite 303
Montgomery, Texas 77356

Unit 7, Riverside Court
Delph, Saddleworth
OL3 5FZ